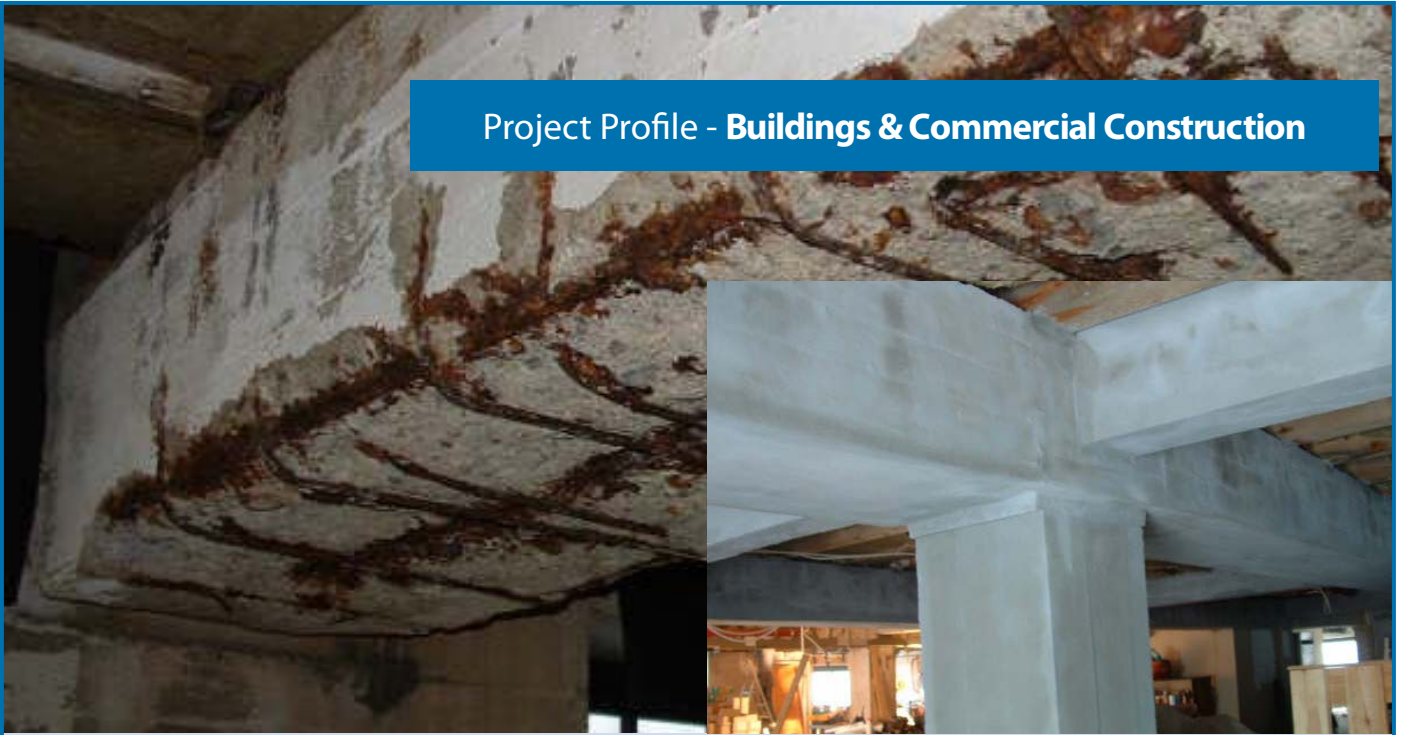


## Project Profile - Buildings & Commercial Construction



### PROJECT

**Staalehuset Salt & Fish Warehouse,  
Norway**

### SUMMARY

Repair and protection of reinforced concrete suffering from salt induced corrosion of the reinforcement.

### PRODUCTS

**Steel Reinforcement Protector 841**  
**Monolite**  
**Monolevel FC**

### CLIENT

Staalehuset Haugesund AS

### BACKGROUND ►

**The Staalehuset Salt & Fish Warehouse was built in 1919 by Steffen Staalesen, who was Norway's largest exporter of herrings with nearly 2,000 employees.**

When completed, it was the largest concrete building in Art Nouveau style in Northern Europe. However, over time, salt had penetrated into the concrete causing the steel reinforcement to the internal beams and columns to corrode resulting in extensive spalling. A major refurbishment was undertaken in 2006 to transform the building into Norway's leading conference, restaurant and concert facility.

### THE SOLUTION ►

Working to a tight budget, the building owners were seeking a solution which would not require the cleaning of steel reinforcement to SA2½. Fulfilling this requirement, 2 coats of **Steel Reinforcement Protector 841** were immediately applied following basic cleaning of the exposed steel. The concrete was repaired with **Monolite** and the pillars finally covered with **Monolevel FC** to give a smooth, waterproof finish.



FM 41091  
EMS 597350  
OHS 597351

Quality  
Environmental  
Health & Safety

**Flexcrete Technologies Limited**  
Tomlinson Road • Leyland  
Lancashire • United Kingdom  
PR25 2DY

**Tel:** +44 (0) 845 260 7005 • **Fax:** +44 (0) 845 260 7006  
**Email:** [web@flexcrete.com](mailto:web@flexcrete.com) • **Web:** [www.flexcrete.com](http://www.flexcrete.com)

